

over-roofing **FILON**ing

The roof refurbishment problem solver



- Quick and easy to install
- Economical
- No planning requirement
- Minimal extra weight
- Minimal disruption

UPGRADED SYSTEM

Gives improved thermal insulation in line with initiatives to reduce carbon footprint and save energy

FILON®

over-roofing FILON

The proven solution for replacement or repair of asbestos cement or metal roofs

The patented FILON Over-Roofing system has been proven in countless diverse applications throughout the UK – from factories and industrial units to leisure centres, retail stores and local authority housing.

Utilising durable profiled GRP sheets, it is designed to make roof replacement or repair quick, trouble-free and economical. Whatever the condition of the existing roof.

Fast, easy installation

FILON's Over-Roofing System is supplied to match most existing roof profiles. The patented Profix spacer is unique and is designed for easy installation.

The economical solution

Low-cost FILON Over-Roofing saves on-site time to further reduce installation costs.

Asbestos and metal profiles

Most asbestos cement roof profiles can be matched, as well as many metal trapezoidal profiles.

Minimal weight – no planning requirement

FILON Over-Roofing is very lightweight yet strong and is manufactured to the same profile as the existing roof. It therefore requires no additional structural supports.

Minimal disruption on-site

Fixed from the outside, FILON Over-Roofing allows total roof replacement or refurbishment to be carried out with minimal disruption to building occupants.

Considerably extends the life of the building

FILON Over-Roofing can make building refurbishment a cost-effective alternative to redevelopment.

Improved insulation

Glass fibre quilt can be incorporated into the system to improve insulation values.

Fixed costs are minimised

FILON Over-Roofing is a one-fix system, saving considerably on time.

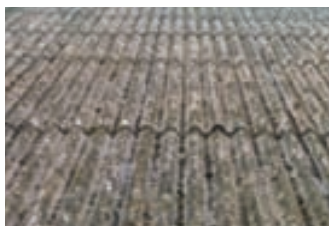
No asbestos handling or disposal problems

FILON Over-Roofing eliminates considerable costs and landfill taxes implemented when asbestos has to be removed.

Proven in use

FILON Over-Roofing has been proven in hundreds of applications around the UK, for clients including: British Steel; Royal Mail; Granada TV; Jewsons; Rolls Royce; Comet; Marks & Spencer and many, many more.

FILON Over-Roofing makes roof replacement or repair quick and simple



Before



During installation



After

Whatever the condition of the existing roof, FILON Over-Roofing is the trouble-free solution, with little disruption to building occupants.



Sports hall roof refurbishment, Newbury, Berkshire

This roof in Darlington, had previously been sprayed with urethane foam in an attempt to cure water ingress. The foam had reacted to the asbestos cement, resulting in increased water ingress. FILON over-roofing solved the problem.

A typical FILON over-roofing installation, showing Profix spacer

Patented Profix spacers for the FILON over-roof system come in two sizes **Profix 25** (for use with either no insulation or up to 50mm loose quilt insulation) **Profix 60** (for use with 100mm loose quilt insulation)

Upgraded system brings compliance with the new Building Regulations

Proven in countless diverse applications throughout the UK, the patented FILON over-roofing system has been subject to further development to provide improved thermal insulation. The upgraded system falls in line with new initiatives to save energy and reduce carbon emissions. FILON over-roofing is available in the following standard profiles:

Bigsix

Standard Six

Cape Fort

Cape Monad

Doublesix

Doublesix M

Major Tile

Trafford Tile

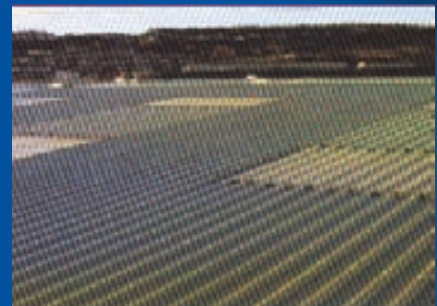
Canada Tile

Atlas Tile

Turnall Combined



Standard Bigsix Over-Roofing including rooflight replacement



Metal profile roof, over-roofed direct-fix, using the FILON Over-Roofing system



A factory roof in Camberley, Surrey, before and after refurbishment with FILON over-roofing

Building Regulations

Opaque FILON GRP sheets to match existing asbestos cement and metal profiles comply with Building Regulations requirements.

Fire performance

FILON Over-Roofing sheets are available in three fire-resistant grades. Generally, all roof sheets will be grade 300 designated AB under BS 476 Part 3 and any existing rooflights which are replaced will be grade 104 rated Class 1 under Part 7.

FILON grade	BS 476 Part 3	Part 6	Part 7
101*	AA	(1)<121 (1)<6	Class 1
104	AA	(1)<20	Class 1
300	AB	-	Class 3

*By definition under UK Building Regulations, FILON Grade 101 sheets are designated Class O.

Standard colours

Cement Grey. Other colours can be made available dependant on quantity required.

Lengths

Supplied in lengths required for individual applications up to 12m. FILON Over-Roofing can be laid as one sheet from ridge to eaves over existing end laps, simplifying fixing and minimising laps on the new over-roof (existing roof sheets have to be in-line).

Weights

The minimum sheet weight for the system is 2.44 kg/m². Heavier and reinforced sheets are manufactured to meet specific structural or wind loading requirements (please contact our Technical Department).

Flashings/ridge

Machine-made adjustable two-piece plain winged ridge flashings and plain edged crown units are available. Hand made profile crown ridge units and turned down eaves units can be made available.

Insulation

Maximum 100mm quilt fibreglass mat can be used underneath the system, using the Profix 60 spacer. (Other forms of insulation such as Multi-foils could be considered and offer excellent insulation values. Clarification as to their use for any particular project should be sought from the manufacturer of the insulation foils as to suitability.)

Operating temperatures

The minimum and maximum temperatures for FILON sheeting are -20°C to +100°C. Sheets will not become brittle or soften at low or high temperatures.

Compatibility

No chemical reaction with other established building products.

Means of escape

FILON Over-Roofing must not be used where the existing roofs form part of or is located under a fire escape.

Labour safety

Do not walk on sheets. Always use crawling boards. Attention is drawn to the Health and Safety Executive Guidance Notes HSG33 Safety in Roof Work, published by HMSO in 1998. Under this guidance note asbestos cement sheets are classified as fragile roofing materials. Although FILON Over-Roofing will provide additional strength to the old roof, for the purpose of maintenance, the roof should still be regarded as fragile.

Transportation, handling and storage

Sheets are normally supplied loose. Store sheets on a flat, clean, level battens at 1.5m centres. Stacks should not exceed 1m in height and must not overhang at ends. Protect against theft and from being blown away. Always protect sheets stored in the open with opaque waterproof covers.

Guarantees

FILON Over-Roofing can be included in the N.F.R.C. Co-Partnership Guarantee Scheme.

Advanced Cladding & Insulation Group Ltd.

Raynes House, 3 Stokes Street, Manchester M11 4QU
Tel: 0161 231 0001 Fax: 0161 231 1055 Email: sales@advancedcladding.com

www.advancedcladding.com

FILON is a trademark of Filon Products Ltd. Information and recommendations contained in this publication are given in good faith without warranty or guarantee. We are constantly seeking to improve our products and therefore reserve the right to alter specifications at any time. No liability can be accepted for any claims, losses or demands arising from contents of this publication. This statement does not affect statutory rights which cannot be excluded by agreement.