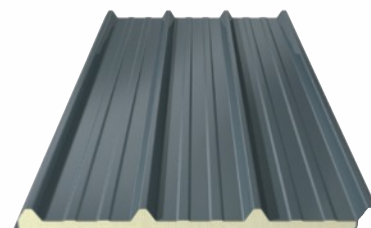
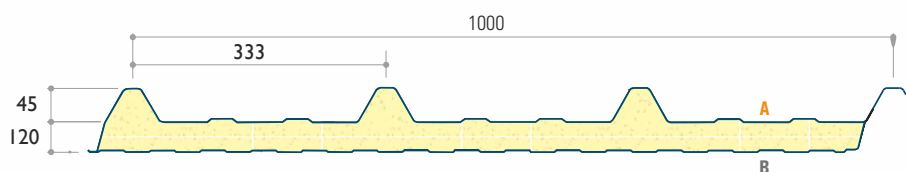


Composite Roof Panel

Application

The JI Roof 1000 is an insulated roof panel used for pitched metal roofs. Due to its metal inner and outer sheet, this panel can combine thermal resistance and big spans. The minimal pitch for its application is 8°.



Thermal Characteristics

| Core Thickness (mm) | 40 | 60 | 80 | 100 | 120 | 150 |
|-------------------------------|-------|-------|-------|-------|-------|-------|
| U-Value (W/m ² .K) | 0.46 | 0.31 | 0.24 | 0.19 | 0.16 | 0.13 |
| Weight (kg/m ²) | 11.71 | 12.51 | 13.30 | 14.10 | 14.89 | 16.09 |

U-values calculated in accordance with the method required by Part L2 (England and Wales) Building Regulations and Section 6 (Scotland) Technical Handbooks.

Product Tolerances

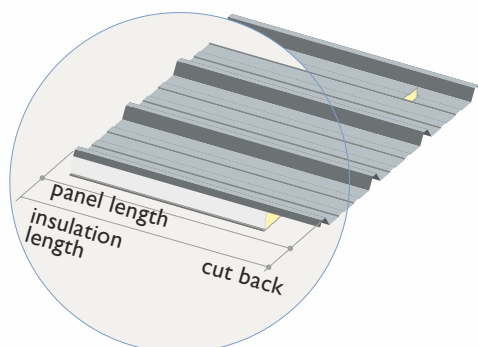
| Length (mm) | L < 3000 mm : -5 mm | L < 3000 mm : +5 mm L > 3000 mm : +10 mm |
|----------------|---------------------|---|
| Width (mm) | -2 mm | +2 mm |
| Thickness (mm) | -2 mm | +2 mm |

Lengths

The JI Roof 1000 panel is available from 2.500 mm until 16.000 mm. Other lengths are available upon demand.

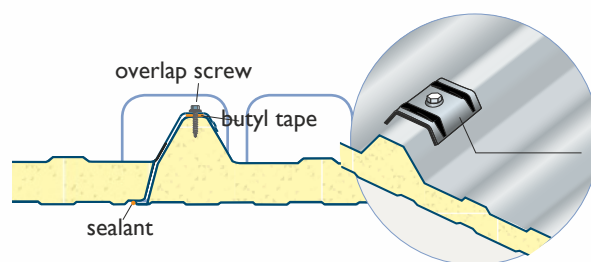
Cut Out

The cut back is standard 50 mm and can go up to 350 mm.



Please specify panel length and insulation length.

- Min insulation length: 2m50-
max. sheet length: 16m.
- Cut back: min. 50 mm
(standard)-max. 350 mm.



Composite Roof Panel

Materials

Steel sheet

S280GD : Z275 – ZA265 (Zink-Aluminum alloy)

Coatings – Outer sheet

- PE 25 μ
- PUR 35 μ
- PVDF 25 μ
- PUR 50 μ - 60 μ
- Plastisol 200 μ HP
- Plastisol 200 μ HPS

Coating – Inner sheet

- PE 15 μ
- PE 25 μ
- Foodsafe
- Colorfarm 35 μ

* Please consult us for our colorflow

Insulation Core

Polyisocyanurate (PIR) core (LPCB Approved)

Fireclass

PIR : B-s2, d0

Packaging

The panels are packed horizontally on a wooden pallet. The top and bottom of the pack is protected by polystyrene blocks to prevent damage due to handling. The number of panels per pallet depends upon the core thickness of the panel.

| Core Thickness (mm) | 40 | 60 | 80 | 100 | 120 |
|---------------------|----|----|----|-----|-----|
| Panels / Pallet | 17 | 13 | 10 | 8 | 6 |

Quality

Our composite wall panels is manufactured complying to the ISO 9001 Standards. The material which are processed are from high quality and were chosen on basis of different criteria to match our customer's expectations. They obtained the EPAQ-label, which is the European Quality Assurance Association for Panels and Profiles. All our products also have the CE-mark.

Contact

Advanced Cladding and Insulation Group, Raynes House, 3 Stokes Street, Manchester M11 4QU,

Telephone - 0161 231 0001, Email - sales@advancedcladding.com

